



User Guide to **PGP** Encryption

UPDATED ON 23 January 2024

Table of Contents

About this guide	3
About PGP	3
GPG command line (open-source)	3
GPG graphical user interface (open-source)	4

About this guide

For the purposes of SCV Verification, FSCS accepts SCV files encrypted with its PGP public key. FSCS's public key is available on our website:

<https://www.fscs.org.uk/industry-resources/single-customer-view/>

For guidance on other available submission methods, please refer to the FSCS Guide to SCV which is also available on our website. There is also a separate user guide available for the SCV Verification Services portal which you can obtain by contacting:

fasterpayoutenquiries@fscs.org.uk

About PGP

PGP is an encryption program that works on most computing platforms. It is fairly easy to use, and there are viable free versions available in addition to the commercial version. The open-source version of PGP, known as the GPG (Gnu Privacy Guard) program, adheres to the OpenPGP standard and is interoperable with all versions of PGP, and is not restricted to non-commercial use. There are numerous front end applications available for GPG to facilitate encryption of files, and it can also be executed completely on the command line. The tools listed in this guide are the most commonly used.

GPG command line (open-source)

GPG is a complete and free implementation of the OpenPGP standard as defined by RFC4880. GPG allows you to encrypt and sign your data and communication. It is a command line tool with features for easy integration with other applications.

Please follow these steps to encrypt your file using the Windows Command Prompt.

1. Import FSCS's public key:

- Download FSCS's public key, entitled "FSCS-SCV-2024.asc" from our website:

<https://www.fscs.org.uk/industry-resources/single-customer-view/>

- Create a folder on the C:\ drive entitled "FSCS".

- Copy the “FSCS-SCV-2024.asc” public key to the “FSCS” folder on the C:\ drive.
- Run the following commands:

```
C:\> cd \FSCS
C:\FSCS>
C:\FSCS>
C:\FSCS>gpg --import "c:\FSCS\fscs-scv.asc" imported gpg: Total
number processed: 1 gpg: imported: 1 (RSA: 1)
C:\FSCS>
```

2. Encrypt your SCV file:

- Use the command below encrypt the SCV file (replace “YourSCVFile.csv” with the actual name and extension of your file):

```
C:\FSCS > gpg --recipient "FSCS Verification Services
<example@fscs.org.uk>" --armor --output "C:\Temp\YourSCVFile.pgp" --
encrypt "C:\SCV\YourSCVFile.csv"
```

3. Submit your SCV file to FSCS:

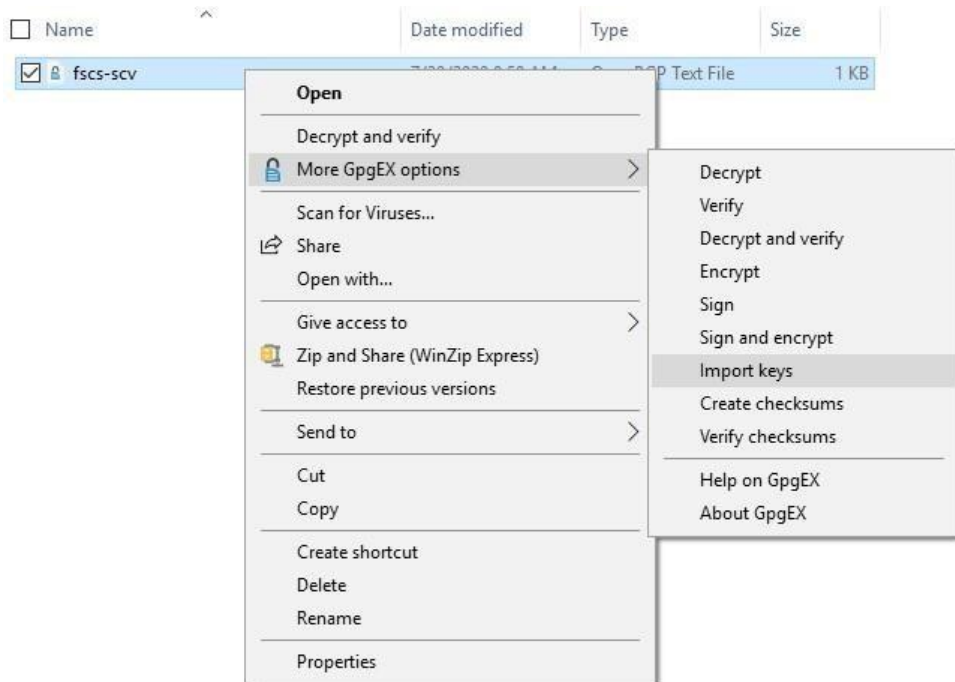
- Refer to FSCS SCV Guide and FSCS Verification Services Web Portal User Manual for guidance on the SCV submission process.

GPG graphical user interface (open-source)

GPG is also available as a tool with a graphical user interface.

Please follow these steps to encrypt your file using this version of the tool.

- Import FSCS’s public key:
- Download FSCS’s public key, entitled “FSCS-SCV-2024.asc” from our website:
<https://www.fscs.org.uk/industry-resources/single-customer-view/>
- Create a folder on the C:\ drive entitled “FSCS”.
- Copy the “FSCS-SCV-2024.asc” public key to the “FSCS” folder on the C:\ drive.
- Right-click on the “FSCS-SCV-2024.asc” public key in the folder “FSCS” folder and click on “More GpgEX options >”, followed by “Import keys”.



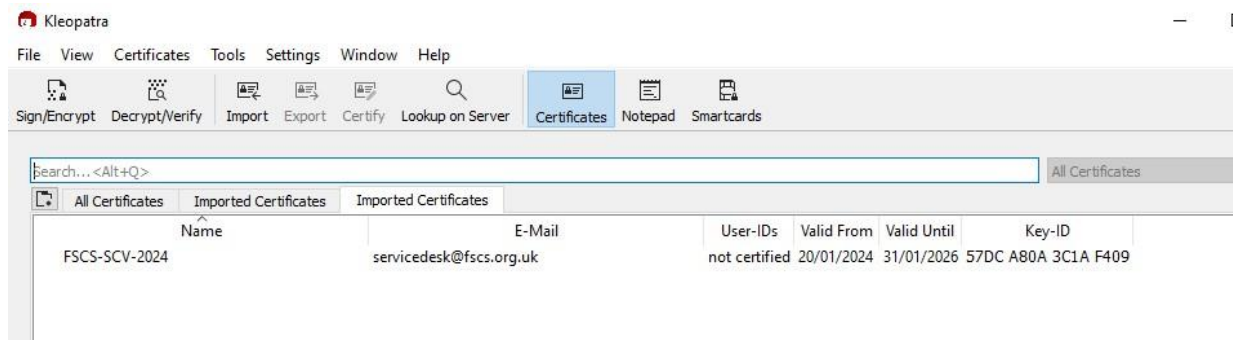
- Select “No” on the following dialog box:



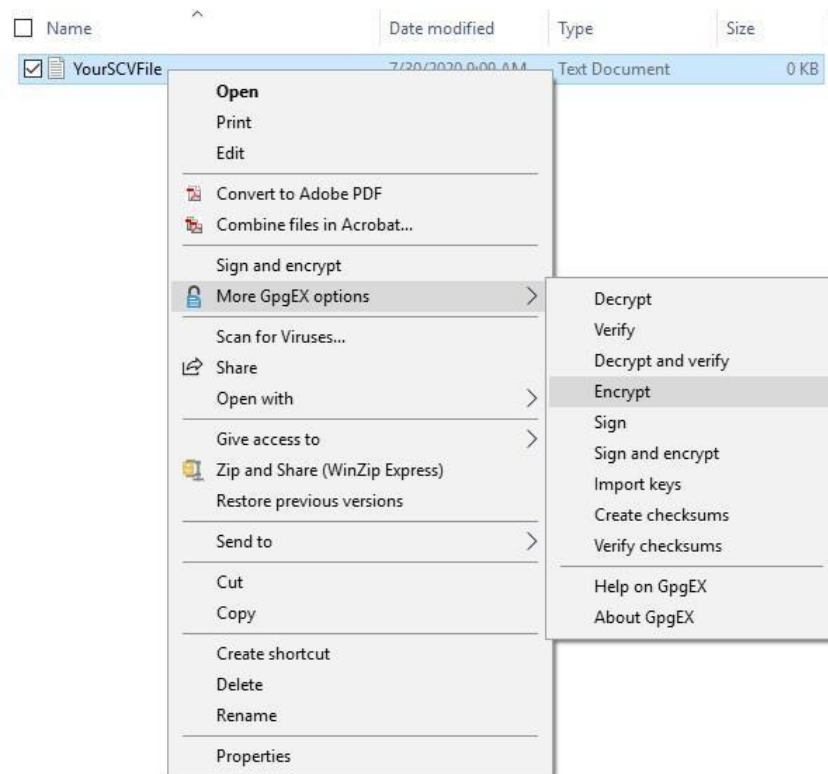
- A dialog box will appear showing that the public key has been successfully imported.



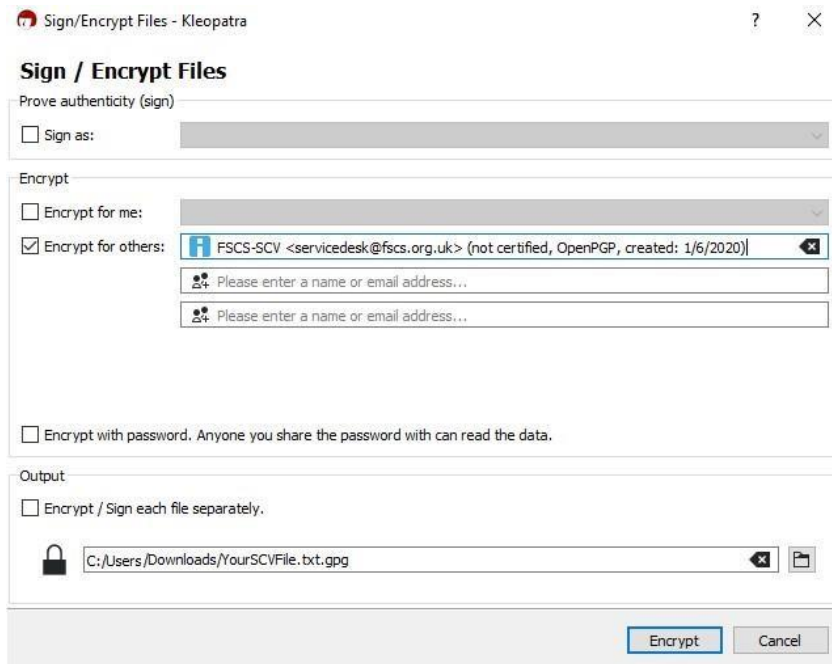
- FSCS-SCV-2024 file should now be listed.



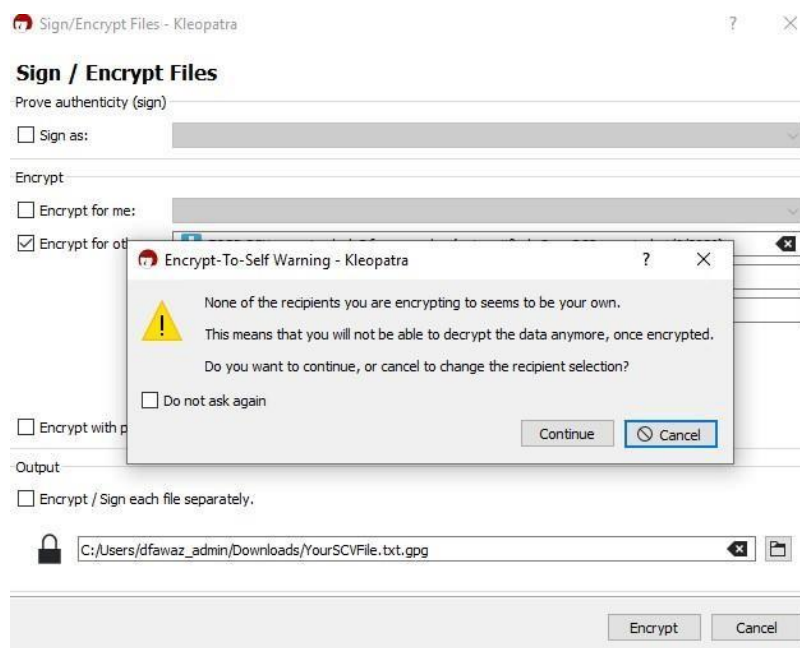
- Encrypt your SCV file:
- Right-click on the file that you want to encrypt and click “More GpgEX options >” followed by “Encrypt”.



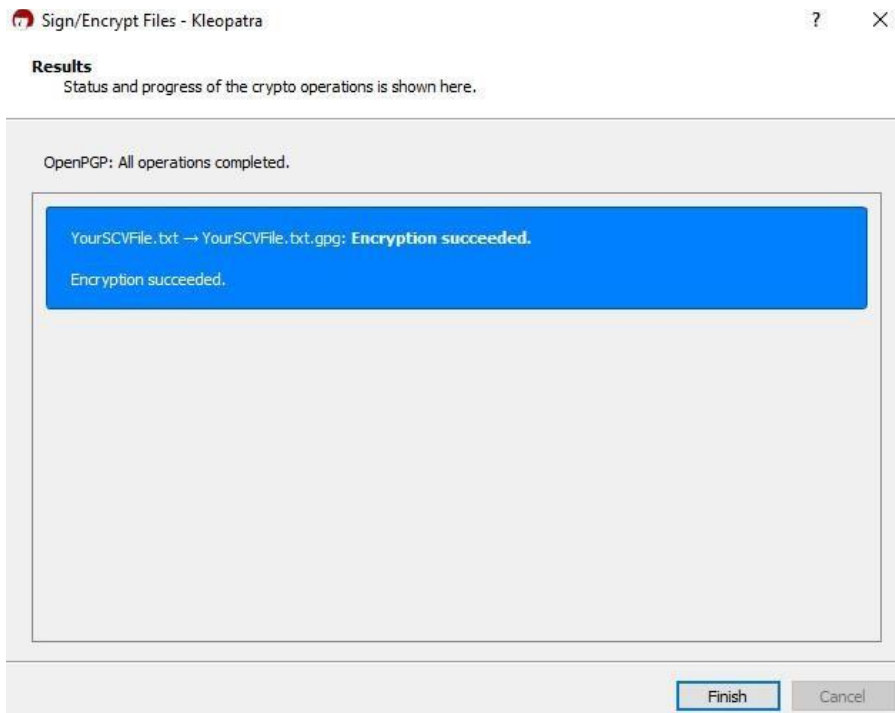
- Select “Encrypt for others” and type “FSCS-SCV-2024” to select the FSCS key, then click “Encrypt”.



- The following warning can be ignored. Click “Continue”.



- The encryption process will start. Click “Finish” once the Encryption success message is displayed.



- Your starting folder should now have an encrypted version of your file.

<input type="checkbox"/>	Name	Date modified	Type
<input type="checkbox"/>	YourSCVFile	7/30/2020 9:09 AM	Text Document
<input checked="" type="checkbox"/>	YourSCVFile.txt	7/30/2020 9:15 AM	OpenPGP Binary File

- If you have file extensions view enabled, the file name be suffixed with .pgp or .gpg.

<input type="checkbox"/>	Name	Date modified	Type
<input type="checkbox"/>	YourSCVFile.txt	7/30/2020 9:09 AM	Text Document
<input checked="" type="checkbox"/>	YourSCVFile.txt.gpg	7/30/2020 9:15 AM	OpenPGP Binary File

- Submit your encrypted SCV file to FSCS:
- Refer to FSCS SCV Guide and FSCS Verification Services Web Portal User Manual for guidance on the SCV submission process.